

The Valley View

Newsletter of the Greater Madison Valley Community Council

Issue 122 June 2004

E-mail: gmvcc@hotmail.com

 *
 * **GMVCC** *
 * **ANNUAL COURTYARD SALE** *
 * **SATURDAY, JUNE 19TH 10AM to 4 PM** *
 * **THE BUSH SCHOOL COURTYARD** *
 * **36TH AVE EAST & E HARRISON** *
 * See inside for details, page 2 *

Good Neighbors

Tim Fowler's Semi-Public Art

By Barbara Dunshee, his neighbor

If you've walked along 26th Avenue, south of Madison, you've probably seen the crazed characters on the house and garage at Howell and 26th. However, you may not be aware of the mosaic paths and statues that enliven the rest of the property or the interesting character responsible for this curious spectacle.

Tim Fowler, a self-taught artist, motorcycle enthusiast and professional roofer has created an intriguing corner in this South Madison neighborhood. Maniacal wooden figures, grinning motorcycle racers and ornately painted sprocket wheel line the roof of the garage and the exterior walls of the 1904 house. *Continued on page 5*

Save these Dates:

Curriculum Plan for ML King School

?? Montessori Program at MLK??

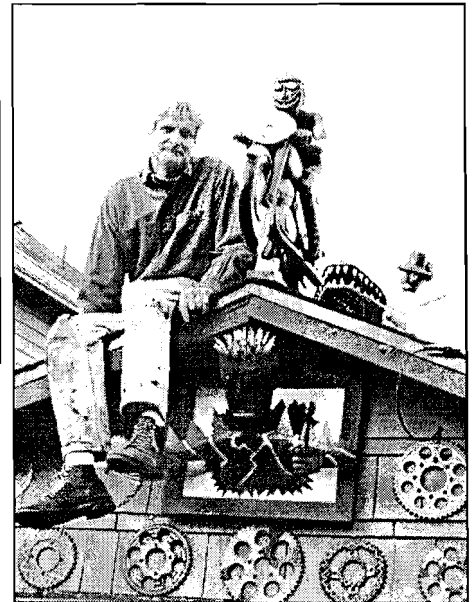
Monday, June 7th 6:30 King School cafeteria

GMVCC meeting with Seattle Police

discussion of citizen concerns and solutions offered

Tuesday, June 15th 7:30 MLK portables

Here is Tim right at home on the roof with some of his creations. You can view this "public art" at his home on 26th Ave East and E Howell Street.



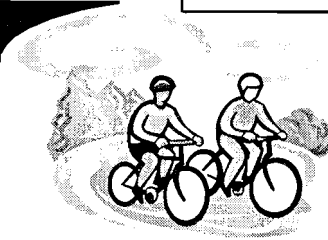
Summertime Safety

By Koll Anderson

Seattle Fire Department, Station 34

Summer can be one of the most fun and exciting times of the year. It's the time for spending more time outdoors in the warm sunny weather, visiting beaches and parks and enjoying activities such as biking, rollerblading, camping and swimming.

Although lots of fun, summertime is also a time to be very aware of safety. Outdoor cooking such as campfires and barbecues, wearing helmets with *continued on page 3*



Enroll Now: MLK Kindergarten Academy

By Joanie Robertson

Principal Barry Dorsey and the ML King Elementary School is proud to announce enrollment is open for the first Kindergarten Academy which will run from August 2 through August 27, Monday -Friday from 9AM to noon. There is no fee.

The Academy is designed to give new students an academic boost and reduce the number of weeks the children need to acclimatize to classroom life. The kindergarten teachers will be coordinating this program which will include:

- * an introduction to the daily routine of kindergarten
- * a chance to meet and bond with the child's teacher
- * early completion of the Kindergarten Assessment
- * a chance to acclimate to the building before the other children fill the hallways.

"The first two years, K-1 are the most important *continued page 2*

In this Issue

| | |
|---|---|
| Summertime Safety..... | 1 |
| Good Neighbors: Tim Fowler's Semi-Public Art..... | 1 |
| ML King Elementary Kindergarten Academy..... | 1 |
| Courtyard Sale Details..... | 2 |
| Spring Art Show and Sale..... | 2 |
| Around the Neighborhood..... | 4 |
| The Classified Valley..... | 4 |
| The Illustrated GMVCC, Council Minutes..... | 6 |
| The Valley Views the Past..... | 7 |

Courtyard Sale: The Details

The Courtyard Sale is our only fundraiser of the year. We use this money to publish our neighborhood newsletter, *The Valley View*, fund the spaghetti dinner and art show, and develop community projects. Please contribute both donations of goods for sale and your volunteer time to help make this event a success.

You can drop off your donations any time outside the Bush School theater. Signs posted near the school will direct you. ALL DONATIONS ARE TAX-DEDUCTIBLE and tax receipts will be available at the theater.

DONATIONS ACCEPTED BEGINNING MONDAY, JUNE 7TH.

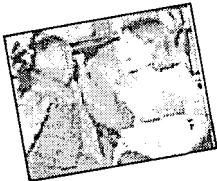
We also need: **quality paper grocery bags** and boxes so just drop off all those bags you have saved and not recycled.

This year we are **NOT accepting** any computer components and non-working electronic devices.

To volunteer your time, please contact Cathy Nunneley at 329-4083 or cjnnunneley@yahoo.com

We will have work parties every evening (except Wed, June 9th) from 7-9PM. See you there! ☺

The Valley School



- Pre-K through 5th grade
- Classic approach
- Intellectually exciting programs
- Diverse community

We are committed to each child

Contact us for a tour

310 30th Avenue East • Seattle • 328-4475

Kron - Kellett Builders, Inc.

Larry Kron, General Contractor

Cell: 206-963-4578 Fax: 206-324-6802

322-36th Avenue East, Seattle WA 98112

Licensed • Bonded • Insured

License #: KRONKB1099RU

First Annual Art Show

The first annual Spring Art Show sponsored by the GMVCC was by all accounts fun and successful. Artists from the Valley, Madison Park and Madrona neighbors combined their creativity to demonstrate the wealth of talent we have among us. Photography, ceramics, sculpture, paintings and jewelry were among the many art forms displayed. The artists each brought gifts of sweets to offer to the guests as they browsed and chose their purchases.

A big thanks to local bakeries for their contributions to the dessert table. Joanne Corse of *Bella Dolce* baked her city-wide famous lemon bars (they didn't last long!) and *Essential Bakery* contributed an eye-popping selection of pastries. Neighbors Eli Stahlhut and Joannie Robertson each baked their best goodies.

Our heartfelt thanks to *The Bush School* for the use of their facilities. The School's commitment to community service continues to be an essential support to the neighborhood.

Volunteers Peggy and Jerry Sussman, Charles McDade, Sandy Levy, Claire Levy, Chelsea Toby, Rebekkah LaDyne, Miriam Roskin and others are to be admired for their service to the neighborhood.

The collaboration with Madrona and Madison Park was especially wonderful. We hope to do more projects and events together. We all benefit from knowing and sharing with our community. ☺



Four teen art lovers, Caty Moniz, Miranda Levy, Claire Levy and Chelsea Toby peruse the desserts offered during the art show. Barbara Dunshee (background right) shows her fanciful ceramic creations.

ML King Elementary Kindergarten Academy, continued from page 1

in the elementary experience," says Principal Dorsey. By extending the school year, the staff make the transition easier for the youngest students and increase academic and social growth during their first year.

Enrollment for the Academy is now open to children who are enrolled in the King kindergarten for the 04-05 school year and also for children currently enrolled in the King daycare program located on the school campus.

Call Principal Barry Dorsey for more information: 252-2905 ☺

with bicycles, rollerblades and scooters, staying hydrated, swimming precautions, and Fourth of July celebrations are all examples of safety concerns.

If we follow a few **Summer Safety Tips**, we can keep our loved ones and ourselves a little safer this year.

1. **Outdoor fires:** Remember: children are curious. Never leave any fire unattended. Supervise all children at all times. Drought may restrict fires. Check local rulings.
2. **Sun precautions:** Stay hydrated with water or juice to help stay cool. Soda and coffee don't count as hydrating fluids. **SUNSCREEN!** Reapply often, especially when swimming or sweating. Cover up when the sun is at it's strongest between 10 AM and 3PM.
3. **Swimming:** Never leave a child unsupervised around any water. Even wading pools can be dangerous. Teach your children to swim. Wear life jackets when enjoying water sports and boating. Swim at beaches with life guards.
4. **Fourth of July celebrations:** The basic fact is: **fireworks are illegal in the City of Seattle.** If you choose to purchase them anyway be aware that even small firecrackers can be dangerous and are known to cause terrible injuries. The best way to enjoy fireworks is to watch the professional shows in various locations around the city.



5. **Helmets and safety gear:** Wear safety devices to prevent head injuries, broken bones and skin abrasions. Remember! Even professionals wear helmets and pads.
6. **Bugs and allergies:** Be prepared for these little creatures and they won't take a bite out of your summer.
7. **First Aid Kit:** Take stock of your kit (you certainly have one don't you!) and make sure you have the necessary supplies to deal with burns, sunburns, scrapes and cuts, bees and bugs. Take your kit with you on your outings or keep one in each car so you don't have to remember.

Summer is a great time to enjoy the outdoors and if we are prepared for the possible hazards we can make it better for everyone. 🙌

Remember: Stay Smart and Be Safe!



GMVCC Contact Information

Council Affairs: Gary Emslie, President

Email: gary.emslie@bush.edu

Council business, agenda requests, inquiries, concerns

Valley View Newsletter: Cathy Nunneley

Email: cjnunneley@com or 329-4083

Article submission, advertising, suggestions, volunteers

GMVCC P.O. Box 22278 Seattle WA 98122



A community inspiring leadership through the values of Respect, Resourcefulness and Responsibility

EPIPHANY SCHOOL

Pre-Kindergarten-5th Grade

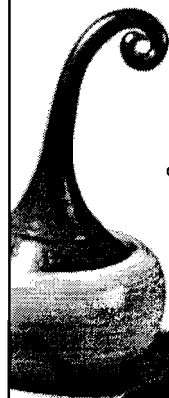


3710 E. Howell St., Seattle, WA 98122
206-323-9011
www.epiphany-school.org

WE ARE EXPANDING OUR SCHOOL APPLY TODAY!

Barbara Dunshee
P O T T E R Y

www.bdpottery.com



*Lively
sculptural
& functional
ceramics*

**NEXT OPEN
STUDIO:**

Arboretum Art Walk!
Visit artists' home/studios

June 12th & 13th
10am - 6pm

1060 26th Ave E, Seattle
206.229.3311 barbara@bdpottery.com

CITY PEOPLE'S GARDEN STORE



2939 East Madison
Seattle, WA 98112
(206) 324-0737
Fax (206)328-6114

Around the Neighborhood

Madison Valley Business Association: The merchants on E Madison have agreed to stay open until 8 PM on Thursday evenings. This is the evening that they hope coincides with a **Farmers' Market** that they are planning for next season. Traffic and pedestrian safety continue to be a concern. Parking difficulties continue to impact the residential community. Everyone is open to ideas about how to remedy these problems. The City will place an additional trash receptacle on the west corner of 29th E and E Madison as there has been a problem with litter there.

East Mercer Street End: Nothing new to report according to Anita Rowe. They are still waiting for the City's decision to open the street end.

Welcome to the Neighborhood: New businesses: *Voila!* the French bistro, *Blue Canoe*, a women's clothing boutique, *Rue de Lyon*, a gift shop and *Birjairs*, antiques and interiors have opened in recent months.

Chanting at Santosha Yoga studio: Come and experience your inner voice. Selected Wednesday evenings at 8PM. Contact the studio for info: 264-5034

Tent Caterpillars: Please check your property for these damaging creatures. They are not harmful to humans. The tents can be removed by pruning early in the morning. www.ci.seattle.wa.us/transportation/seasonalinfo.htm on the web for more info. 🐛

The Classified Valley

Canoe Wanted: Pass along your unused canoe to a good home. Low cost and non-aluminum desired for evening paddles on the lake. Canoe you help me?

Call Stephen: 323-1286 or stephen@lamarca.org

Classified ads are a new addition to our newsletter, *The Valley View*. Ads are \$5. To submit an ad contact Cathy Nunneley 329-4083 or email at cjnunneley@yahoo.com



The Bush School
EXPERIENCE EDUCATION

*Thank you to our neighbors
for making the Greater Madison Valley
a great place to educate kids!*

The Bush School 3400 East Harrison Street Seattle, WA 98112
www.bush.edu



Experience a Florentine Market
Shop for New York Style . . . at Bella Rose

DAZZLING HOME DÉCOR, WONDERFUL BAGS, AWESOME JEWELRY,
GORGEOUS ANTIQUE TABLES & PIANO, SPECTACULAR LAMPS

OPEN DAILY FREE PARKING IN STORE LOT
2811 A EAST MADISON STREET, SEATTLE 206-322-1977

MAKE A DIFFERENCE with Bailey-Boushay

Bailey-Boushay House is recruiting volunteers to provide transportation, companionship and meal service to clients of the Adult Day Health and Residential Care programs.

This is an opportunity to make a difference in the lives of people who are living with HIV/AIDS and other life threatening illnesses. Individuals with a reliable vehicle, a current driver's license, insurance, and who are available during the day should call David Pavlick at (206)720-2260 and request a volunteer application.

a creative world of vegetarian foods



CAFE FLORA
Restaurant & Catering

**DINNER • LUNCH • KID'S MENU
WEEKEND BRUNCH**

**FULL SERVICE CATERING
VEGAN CAKES FOR WEDDINGS
& SPECIAL OCCASIONS**

2901 EAST MADISON STREET 325.9100

for catering information call : 322.3626

view menus online: www.cafeflora.com

Fowler bought the house in 1986 as a condemned ruin in a neglected neighborhood. He rebuilt it with a friend, turning it into a duplex and living in the lower half.

Once muddy paths to the back yard have been replaced by meandering concrete mosaics, better not only for walking but also for moving Fowler's expansive collection of motorcycles in and out. (he not only works on and races Vintage 160cc motorcycles, but has created a new racing class and following for these smaller engines.)

Several life-size statues live in the back yard. A white tiled mummy and a chubby adolescent both frozen in zombie poses stand with "Rock Guy" and Brick Guy" near a proper gentleman tipping his hat. The "Cement Girlfriends", intricately tiled statues of young women in their Sunday best, are cantilevered on rebar to sway when touched.


The rustic interior of the house seems comfortable juxtaposed against more utilitarian mosaics that cover half the floor, walls and chimney. Fowler explains that these decorations were simply a good way to deal with the faults of the original flooring and walls, but it takes a highly active mind like Fowler's to innovate such a visually compelling solution to a struc-

themselves throughout the house and property.

Postcards, photos and lists are pinned to a beam that runs the length of the main room. More figures made of wood or spare parts seem to truly belong where they stand. I asked Tim if he shows his work anywhere and he pulled a book from an overloaded bookcase. The book, Tree of Life -The Inaugural Exhibit of The American Visionary Art Museum in Baltimore, is an impressively large coffee table book. Fowler's dramatic work is featured on several pages. His work is also shown at **Mia Gallery, Garde-Rail Gallery** and other well known art houses. He recently installed a bank of the smaller motorcycle racers in the "Smarty Pants" bar in Georgetown. However, most of his work is so heavy that he doesn't want to move it anymore.

Unmovable art melds well with a generous heart and Tim is willing to share his extensive cast of characters with strolling neighbors. Perhaps some enterprising artists will organize an art walk in that part of the neighborhood. Tim's work would surely be a popular draw for art lovers eager to see artists in their creative studios.

Intrigued?? Always wondered what that wild house was all about?? You can call Tim at 324-0408 or just stop by and maybe he'll be home for a tour! His address is 2600-1/2 E Howell. Those with computers can visit Garde-Rail's website at: <http://garde-rail.com/artists/tim.html> and view more images of his work.☺



TENNIS LESSONS

For individuals and small groups of all kinds

Lew Kiner

lew@miniaturecase.com

Rates and (excellent) references available upon request
USPTA licensed



2808 East Madison Street 206.325.7442

www.rovers-seattle.com

Gourmands from all over the world seek out *Rover's* to enjoy award-winning Chef/Owner Thierry Rautureau's innovative sauces as he turns dinner into fine art.

"The Chef In The Hat!!!" prepares three price fixed menus and an "A la Carte menu of Northwest Contemporary Cuisine with a French accent Tuesdays through Saturdays at his newly remodeled little restaurant filled with art and warm sophistication.

Experience the newly added "Friday Lunch" served Noon to 2PM!

****Seattle Times 2003
****Seattle Post Intelligencer 2002
28 out of 30 Rating for "Food" in Seattle's Zagat 2004

One of a kind resource center

FOUR SEASONS OASIS



Supporting the journey of grief, illness and loss

- Over 600 book titles for adult, teen and children
- 350 card designs
- Gift baskets
- Comforting gifts

- Individual & group counseling
- Massage
- Arrangement & referral services
- Programs
- Pet loss

206.726.0500

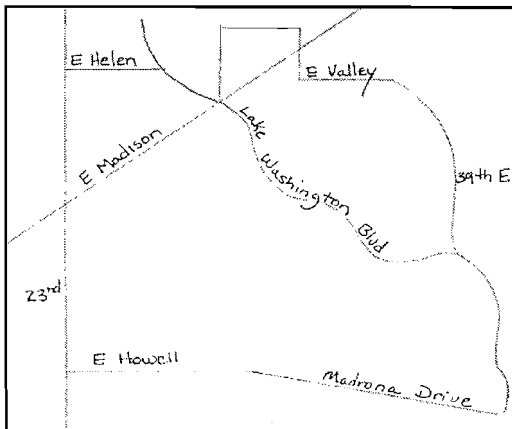
The Madisonian Building
2909B E. Madison St



The Illustrated GMVCC

This map illustrates the current boundaries of the Madison Valley Neighborhood served by the Greater Madison Valley Community Council.

**G
M
V
C
C**



Please support our generous advertisers from the Madison Valley business community. Without their support, *The Valley View* would not be possible!
Thanks a bunch!

Support *The Valley View*

The Valley View staff cheerfully works countless unpaid volunteer hours to bring you this newsletter. The printing and postage costs are over \$700 per month. We must have financial support from the community to continue the newsletter. Please make a contribution or place an ad with us. Everything helps! Thank you so much!

Name: _____

Address: _____

Phone: _____

Email: _____

Donation Amount: _____

Please contact me to write for *The Valley View*

Mail your contribution GMVCC P.O. Box 22278 Seattle, WA 98112

Community Council Minutes

GMVCC Meeting of May 18, 2004

The meeting was called to order by Charles McDade, our Vice-President. There was a quorum present.

Election of Officers: The slate of volunteers: Gary Emslie, president, Charles McDade, vice-president, Eli Stahlhut, treasurer, Joanie Robertson and Anderw Engelson MLK school reps were elected unanimously. The position of secretary remains vacant.

Courtyard Sale: June 19th. See related article, page 2.

Denny-Blaine & Madrona Neighbors of Epiphany School were represented by Bart Smith and Loring McAllister. They presented their concerns to the group regarding the proposed expansion of the school. They wish to adopt a model similar to **The Neighbors of Bush Assoc.** to draft an agreement between the neighbors and the school. Additionally, they wish to meet with the Bush group to combine efforts in the neighborhood. It was suggested that the proposed expansion of The Valley School may merit a community wide committee that oversees the relationship between these schools and the neighbors. Concerned neighbors may attend the June 1, 7:15 meeting of the Madrona Council to participate in a discussion and vote on the council's position regarding the expansion. For info: Bart Smith, 101 Madrona Place E.

Proposals to Change Curriculum at ML King School

Many parents were present to support the adoption of a Montessori curriculum at the elementary school. A rep from The Learning Tree described the Montessori philosophy as one of nurturing choice for life time learners. The Dream Foundation reps also added the possibility of a Head Start, parent coop school or other child development program. The current curriculum was defended by the first grade teacher. There were no clear ideas about what the superintendent or school board has planned for MLK. Parents wished to be educated about how to approach the Board with their proposals. Barry Dorsey, principal, set up a community meeting for June 7 at 6:30PM in the school cafeteria to hear viewpoints. It was expected that school board members, Mr. Dorsey's supervisor, and reps from the different programs will present ideas so that the parents are able make an educated, informed choice.

The Neighbors of Bush plan to sign the agreement as printed in the May issue of *The Valley View*. They will work with the Epiphany neighbors.

Andy Goulding represented the **Safe Routes to School Project**. He asked for a letter of support from the Council. The vote for such a letter was unanimously in favor. A letter will be written by the secretary, Claire Levy and sent to Mr. Goulding by the end of the week to meet the deadline. Info: ARGoulding@aol.com

The Art Show was fun and successful. We will organize it next year if interest continues.

No new news on the **E Mercer Street End**.

The meeting was adjourned at 9:00PM.

The Valley Views the Past

Lakeside School Has Its Roots in Our Valley

It is interesting that today the prestigious Lakeside school is nowhere near a lake. In fact, the name is a hold-over from the school's past location on the shores of Lake Washington in our neighborhood.

In 1914, Frank Moran started the Moran School on Bainbridge Island. World War I transformed the school into a military academy and the school moved to Seattle. The new *Moran-Lakeside School* was founded on the beautiful Kittinger Estate known as "Cherry Hedge" in 1919. The estate's site on Lake Washington gave the school its name.

The living room was used as a general meeting area and recital hall. The sunroom and two upstairs bedrooms were used as classrooms for the 15 students and five teachers. Other bedrooms were utilized as dormitories for the six or seven boarding students. The upstairs ballroom was converted into the school gym.

After five years, Mr. Moran retired and the school became the *Lakeside Day School* governed by a Board of Directors. Reginald Parson was the board president and is considered the "Father of Lakeside".

It became apparent to the Board that the present location of the school was inadequate for the number of students needed to make the school financially stable. Also, the school's proximity to the lake was a

safety concern for the students.

In 1925, the school was moved to 405 36th Ave East, the present location of today's *Bush School*. A stable was built to accommodate the three students who rode their horses to



This home is on the site of the original school at 39th Ave E and E Harrison. A fire destroyed some of the original house and it was rebuilt as we see it today.

school. Interestingly, *The Bush School* still retains the original phone number of the *Moran-Lakeside School* from 1919.

Again, financial concerns and the need to accommodate even more students prompted the move to Lakeside's present location in North Seattle.

Source: [A History Before We Forget](#) by Robert Denny Watt '30 generously loaned to us by The Lakeside School archives

Thank you, Lakeside! 🙏

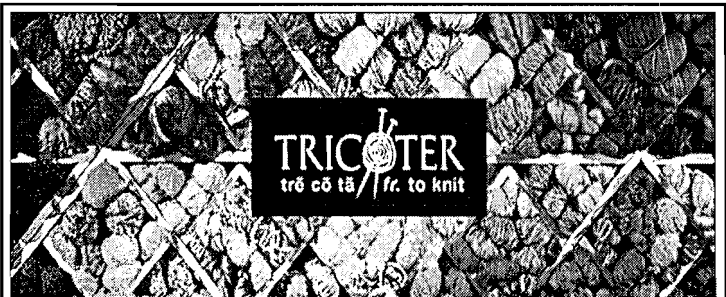
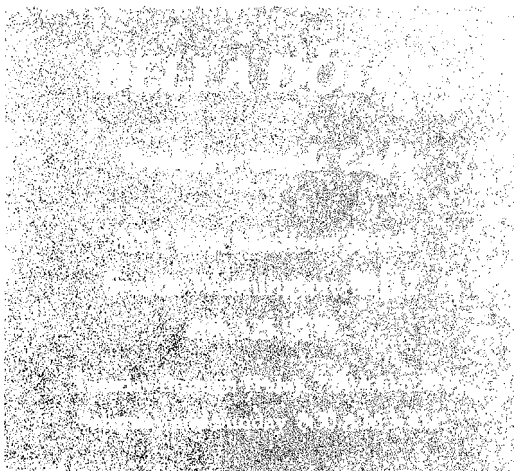
Mark Herkert
Owner / Certified Arborist



Madison Park Tree
Pruning, Removal, Planting

Call for a free estimate
(206) 322-4546
Licensed, Bonded, Insured

2514 E. Ward St.
Seattle, WA 98112
e-mail: belthormark@aol.com



WHERE IMAGINATION
HAS NO LIMITS

Authors of [Simply Beautiful Sweaters](#),
[Simply Beautiful Sweaters for Men](#), and
[Knitted Throws and More](#)
for the [Simply Beautiful Home](#)

Please Visit Us!

3121 E. Madison Street Seattle, WA 98112
Phone: 206-328-6505
Toll Free: 877-554-9276
Web site: www.Tricoter.com
E-mail: tricoter@tricoter.com

THE VALLEY VIEW
 P.O. Box 22278
 Seattle, WA 98122
 Greater Madison Valley
 Community Council
 Member of the Seattle
 Community Council Federation
Newsletter Staff
 Miriam Roskin, Editor
 Jerry Sussman
 Cathy Nunneley
 Jeanette Karovsky



Non-Profit Org.
 U.S. Postage
PAID
 Seattle, WA
 Permit No. 6873

The Valley View is published nine times each year.
Deadline: 15th of each month.
 Your submissions are appreciated!
 Mail to the address above.

2002-2003 Officers

President - Gary Emslie
Vice President - Charles McDade
Secretary - Miranda and Claire Levy
Treasurer - Eli Stahlhut
MLK School Rep. - Joanie Robertson and Andrew Engelson

Next Community Council Meeting

June 15, 2004, 7:30 p.m.

Martin Luther King Elementary School Portables
 3201 E. Republican Street

We are on vacation until September! Have a wonderful summer!

SANTOSHA



We now have childcare Tuesday and Thursday mornings!

206.264.5034

www.santosha-yoga.com

2812 East Madison St. Seattle

A REFUGE FOR

PHYSICAL HEALTH

5 WELL-BEING

Acupuncture

Elizabeth A. Goldberg, L. Ac.
 FIVE SEASONS ACUPUNCTURE

3111 E. Ward Street | Seattle, WA 98112 | T: 206.371.7215 F: 206.325.5067

elizabeth@fiveseasonsacupuncture.com

SOUTH SEATTLE

Star
 The World Scapes Here

Your Community Newspaper

206-721-7265

info@southseattlestar.com

www.southseattlestar.com